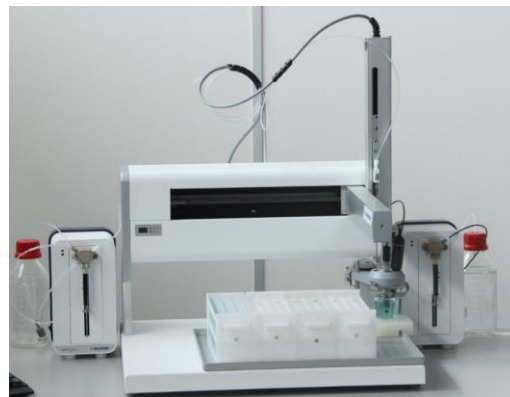


## TitreFAST - Automated High Through-put TAN analysis

The TitreFAST TAN is a high through-put and high speed automated analyser for Total Acid Number analysis in oils and Lubricants. The TitreFAST is normally configured with a static cell to deliver unmatched speed, throughput and capacity.

- Samples are pipetted eliminating the need for time consuming weight measurements
- Capacity of 350 15ml samples for the GX215 and 280 15ml samples for the GX271
- Uses low cost disposable sample tubes
- Offers fast titration with dynamic focused end point detection for unmatched accuracy
- Needle wipe to prevent contamination and automated reagent waste removal
- SMART rinsing which automatically increases rinse time after a sample with a high concentration
- Can use custom sample racks

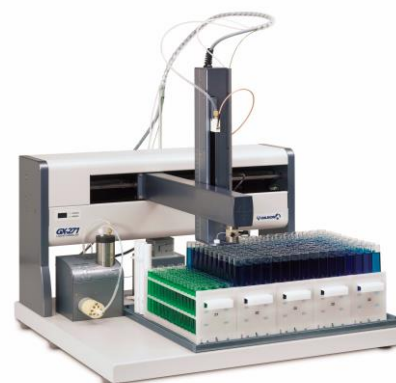


**Applications:** Waste oil, Transformer oil, Engine oils, Hydraulic fluids ASTM D663, D974, ISO 3771, IP400

## PrepFAST - liquid handling and Bespoke automation

The PrepFAST automation is designed as a flexible high speed robot for most liquid handling preparation steps. This includes dilutions, liquid dispensing and standard preparation. The system is highly configurable to match the exact requirements of your automation needs.

- Single and multi-probe options that can also eliminate contamination for oil dilution
- Flexible customisable software
- Can be configured with a custom rack
- Aqueous and non-aqueous liquid handling possible
- Can be integrated with third party systems such as ICP-MS, UV-vis



**Applications:** Dilution of oils for ICP MS/OES. Liquid sample and standard Preparation for techniques such as liquid and Ion Chromatography.

A1-envirosciences automated chemistry division provides a unique portfolio of cutting-edge technologies for laboratory automation. Focused on the goal of eradicating sample preparation and analytical bottle necks, our dedicated team can provide the answer to problematic laboratory automation obstacles, with a range of bespoke automated products and solutions.

If your off-the-shelf instruments do not provide the solution to your current or future automation requirements, contact our team of experts who can offer advice on an alternative, customized solution that meet your demands of your laboratory



# WolfLabs

**Pricing on any accessories shown can be found by keying the part number into the search box on our website.**

The specifications listed in this brochure are subject to change by the manufacturer and therefore cannot be guaranteed to be correct. If there are aspects of the specification that must be guaranteed, please provide these to our sales team so that details can be confirmed.

**[www.wolflabs.co.uk](http://www.wolflabs.co.uk)**

**Tel : 01759 301142**

**Fax : 01759 301143**

**[sales@wolflabs.co.uk](mailto:sales@wolflabs.co.uk)**

Please contact us if this literature doesn't answer all your questions.